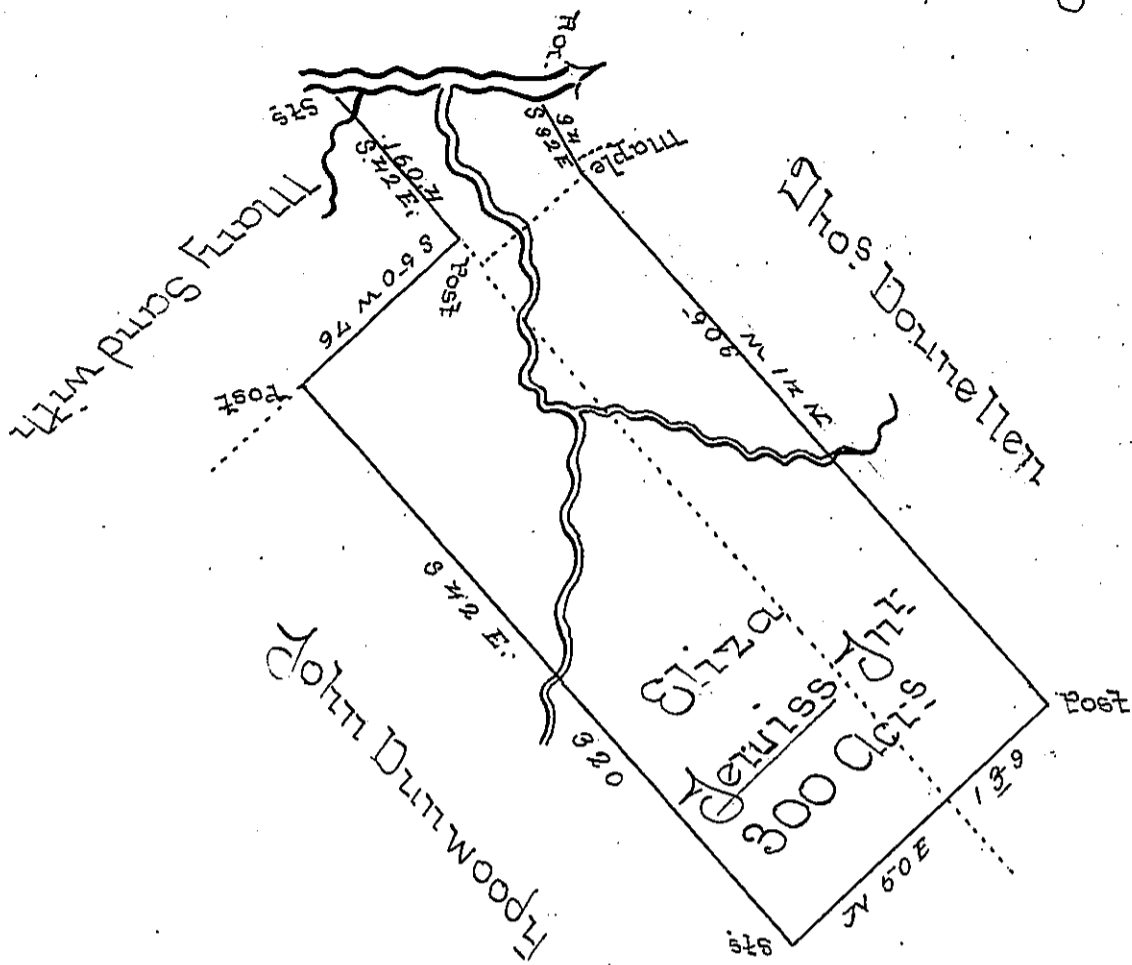


Courses and Distances
from Roc. Up to Sts



N 82 W	34
S 67 W	18
N 85 W	26
N 68 W	34
N 28 W	14
N 67 W	34
N 69 W	46

Draught of a Tract of Land situated in Pike Township Clear-
field County on the west Branch of Susquehanna Containing
Three Hundred Acres and the Usual Allowance of Six per Cent
for Roads &c. Surveyed 20th Sep^r 1828 in Pursuance of an
Application No. 1855 Granted to Eliza James Jun^r for 300
Acres Dated the 3^d Day of April 1769

To Gabriel Heister Esq^r
Surveyor General

David Ferguson

Note the Above Survey Interferes with Mary Sand-
with, 28 acres Warrant Dated the 10 Day of January 1800
Surveyed 4th Sep^r 1800 and with John Dunwoody 15th
Warrant Dated 1793 Surveyed 1793 and is Unoccupied
Lines Found

IN TESTIMONY that the above is a copy of the original remaining on file in the
Department of Internal Affairs of Pennsylvania, made con-
formably to an Act of Assembly approved the 16th day of
February, 1833, I have hereunto set my Hand and caused
the Seal of said Department to be affixed at Harrisburg, this

5th day of April 1898.

James W. Patton
Secretary of Internal Affairs.